

2019 NAVIGATOR





THE LUXURY EXPERIENCE REDEFINED

Time is the ultimate luxury, which is why Lincoln is dedicated to helping you spend more of yours the way you prefer. As a Navigator driver, you'll be able to access remote vehicle features, contact a Lincoln Concierge, and find and pre-pay for parking in select cities easily with the Lincoln Way™ app on your mobile device.¹ With complimentary Lincoln Pickup & Delivery,² you can continue seamlessly through your day while we service your vehicle.² Plus, Lincoln is working with CLEAR[®] to help you soar through lines at the airport.³ It's all part of an exclusive collection of services we call the Lincoln Way – benefits designed to help uncomplicate your life and make each day more effortless.

As you approach, Navigator awakens with a graceful greeting. Dynamic signature lighting flows outward beneath the headlamps while the Lincoln Star on the grille glows from within.⁴ Illuminated welcome mats, backlit door handles and power-deployable running boards⁴ invite everyone inside. Your front door-sill scuff plates and safety belt buckles also illuminate,⁴ while a field of stars dances across your instrument cluster. Begin each journey on a bright note in the 2019 Navigator.

¹Lincoln Way app is available via download and compatible with select smartphone platforms. Learn more at lincolnway.com. Message and data rates may apply. ²Lincoln Pickup & Delivery is valid for owners of 2017 or newer model-year Lincoln vehicles. Service available for retail and warranty repairs. Mileage limitations may apply. See dealer for details. ³CLEAR is currently available to U.S. citizens and legal permanent residents with valid photo I.D. Program eligibility for new retail purchases of 2018 and newer model-year Lincoln vehicles (12 months on Lincoln Black Label models; 6 months on all other Lincoln models). Full CLEAR enrollment, including biometrics, required to be completed within 120 days of vehicle delivery. ⁴Available feature.





CURATED FOR YOUR COMFORT

Lincoln artisans honed every aspect of this serene sanctuary. The sweeping horizontal lines of the hand-wrapped dashboard reinforce the spaciousness. Real wood trim naturally enriches the ambience. French seams on the upholstery are stitched precisely 6 mm apart. European stitching adorns the Wollsdorf leather-trimmed heated¹ steering wheel.

¹Available feature.





Inspired by private aircrafts, the best-in-class¹ Perfect Position Seats with Active Motion^{®2} feature a patented comfort-carrier design that flexes around you. Active Motion massage functionality can help reduce muscle fatigue in your upper legs and lower back. You'll also enjoy heated and ventilated settings, and 30-way adjustability with these front seats.² Each time you return, Navigator can access the Personal Profile associated with your key fob to recall your preferred settings for the driver's seat, pedals, steering column, sideview mirrors, audio and climate control preferences, and much more. Your front passenger can also recall seat settings² with a touch.

Tucked inside the media bin, a wireless charging pad^{2,3} lets you securely stow and charge your phone, without any cords. Steering wheel-mounted controls make it easy to personalize content on your digital instrument cluster, as well as on the Head-Up Display (HUD).^{2,4} The HUD features DLP Technology – the same technology used in digital movie theaters – that helps make it easy to view, even while wearing polarized sunglasses. Plus, it automatically elevates the prominence of certain content, such as an adverse road condition or an upcoming turn within navigation, as the relevance of that information increases. Navigator makes it easy to stay in the know while keeping your eyes on the road.

¹Class is Large Traditional Premium Utilities based on Lincoln segmentation. ²Available feature. ³Available Qi wireless charging may not be compatible with all mobile phones. ⁴Don't drive while distracted. See owner's manual for details and system limitations.





CARING FOR YOUR CREW

Treat your loved ones to best-in-class 2nd- and 3rd-row leg room in Navigator. On 8-passenger models, the PowerFold® 2nd-row bench seat¹ features heated outboard positions and independent adjustability for each occupant. The heated, leather-trimmed, 2nd-row captain's chairs on 7-passenger models include PowerFold functionality and a convenient 2nd-row center console¹ or a pass-through opening¹ to the 3rd row.

A 4" LCD screen on the 2nd-row console displays station names and song titles for passengers to view as they adjust the auxiliary audio controls. Vibrant 10" adjustable screens on the 1st-row seat backs are part of the Lincoln Play Rear-Seat Entertainment System.¹ Plus, 2nd-row riders can use the climate controls on the back of the 1st-row console to set a preferred temperature, while those in the 3rd row take advantage of power reclining seat backs.

¹Available feature.



PAMPERS ALL ITS PASSENGERS

TRAVELING WITH EASE

To access the spacious cargo area behind the 1st, 2nd or 3rd rows, simply kick your foot beneath the Hands-Free Liftgate. Then, press the PowerFold 2nd- and 3rd-row seat buttons in the cargo area to create a flat load floor in a flash. The Tiered Cargo Management System¹ can be positioned 4 ways to help make the most of the rear cargo area on every trip. Use it as a partition, a shelf or a flat load surface, or position it to help keep items securely inside while the liftgate is opening.

One-touch, tilt-and-slide functionality on all of the 2nd-row outboard seats allows for effortless loading and unloading of people as well as cargo. Passengers can get in and out quickly and easily, even if you have a child safety seat secured in the 2nd row. You also get a class-exclusive parent-position middle seat with the 2nd-row bench.¹ You can slide it forward, close to the front console, making it easy for your 1st-row passenger to reach a child seated there. And when your 3rd-row seat is empty, you can push a button from the driver's seat to fold the outboard head restraints down out of your line of sight.

Relaxing is easy beneath the power panoramic Vista Roof^{®1} with the largest opening in its class.² To help maintain the positive energy, Navigator features a total of 6 USB ports, including 2 in the 3rd row that can keep charging devices for up to 75 minutes after you've turned the engine off. You'll also find a 12V powerpoint and a 110V power outlet in the 2nd row, and another 12V powerpoint in the rear cargo area.



Cargo and load capacity limited by weight and weight distribution.
¹Available feature. ²When properly equipped. Based on internal opening.

2019 LINCOLN NAVIGATOR
Lincoln.com



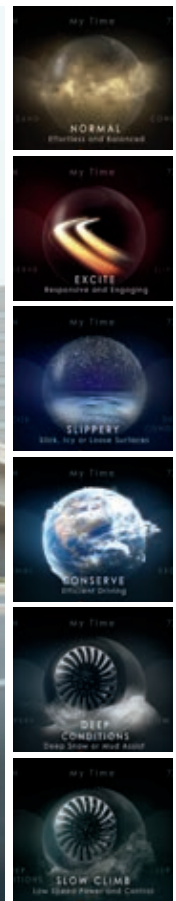


Navigator reinforces your calm confidence with best-in-class 450 horsepower¹ and 510 lb.-ft. of torque¹ produced by its Twin-Turbocharged 3.5-liter V6 engine. It also has best-in-class city and combined fuel economy, as well as an unsurpassed EPA-estimated rating of 23 hwy mpg.² The 3.5-liter is paired with a 10-speed SelectShift[®] automatic transmission that's designed to adapt in real-time, engaging the right gear at the right time to deliver the performance you seek.

Imagine yourself gliding effortlessly along – blissfully at peace. Adaptive Suspension³ helps get you there smoothly by isolating the vehicle from road imperfections, while enhanced sound-absorbing materials and Active Noise Control help keep road noise at bay. The result is a relaxing atmosphere conducive to quiet contemplation or pleasant conversation.

With its best-in-class tow rating of 8,600 lbs.,⁴ Navigator makes it easy to enrich your adventures with family and friends. Our Smart Trailer Tow Connector and trailer sway control⁵ technologies come standard. Pro Trailer Backup Assist^{TM3} lets you rotate a control knob in the direction you want your trailer to go, as the system steers the vehicle to turn the trailer for you.⁶ Electronic Traction Assist³ directs torque to certain wheels for improved stability in turns and to help with challenging situations like boat launch ramps. It can shift torque to the wheel with the greatest traction, or even lock the rear axle if needed, to keep you moving.

Lincoln Drive Modes adjust to suit your driving conditions, or the type of driving you want to do, with the simple turn of a knob. From Normal to Slow Climb,³ beautiful animations on the digital instrument cluster help you make your selection, and Navigator takes care of the rest. Traction control, steering and pedal response, 4-wheel drive (4WD)³ and suspension settings, even the sound of the engine, all are adjusted automatically according to the mode you've selected.



¹Horsepower and torque ratings achieved with 93-octane fuel. ²When properly configured. EPA-estimated ratings of 16 city/23 hwy/19 combined mpg, Navigator 4x2 SWB. Actual mileage will vary. ³Available feature. ⁴Navigator RWD models only, when properly equipped. ⁵Remember that even advanced technology cannot overcome the laws of physics. It's always possible to lose control of a vehicle due to inappropriate driver input for the conditions. ⁶Driver-assist features are supplemental and do not replace the driver's attention, judgment and need to control the vehicle.





VOICE-ACTIVATED SIMPLICITY

SYNC 3 makes it easy to listen to your favorite music, handle phone calls and more, while you're on the go.¹ It all works through simple voice commands and the controls on your steering wheel. The system also includes Apple CarPlay™ and Android Auto™ compatibility.²

SYNC 3 AppLink^{®3} gives you voice control of compatible mobile apps on your connected phone, too. You can use it with the Waze™ community-based traffic and navigation app³ on your iPhone.® Plus, Navigator now works with Amazon Alexa in two convenient ways. While inside the vehicle, you can ask Alexa to play music, listen to audiobooks, check the weather, control smart home devices and much more, through the Lincoln+Alexa app.⁴ While at home, you can use the Lincoln Way Alexa Skill⁴ on your Alexa enabled device to remotely start your vehicle and climate control system, lock and unlock the doors, and more.

((SiriusXM))

SiriusXM[®] gives you music, sports, comedy, news and more – in your Navigator and on the go with a 6-month All Access trial subscription.⁵ Plus, you'll enjoy a 6-year prepaid subscription⁵ to SiriusXM Traffic and Travel Link[®] services – the longest of any automobile manufacturer⁶ – with the Voice-Activated Touchscreen Navigation System. You can use it to check fuel prices and station locations, taking advantage of all the latest traffic and travel information, along with vivid 3-D maps and pinch-to-zoom capability, on the large touchscreen within easy reach.



EXCLUSIVE AUDIO

Lincoln is the only automaker to offer Revel[®] and Revel Ultima^{®7} audio systems. They're expertly engineered to deliver a level of precision and musical accuracy you won't just hear – you'll feel. It's as if you're seated in the "Audience" or up "On Stage" when using the personalized listening modes. Outstanding, multi-dimensional sound in every seat is courtesy of advanced cabin correction tuning, QuantumLogic[®] Surround sound technology, and Revel Waveguides. Revel Ultima⁷ features 20 speakers and patented Clari-Fi™ music restoration technology that enhances satellite radio, streaming services, MP3s and other digital sources – for clear, crisp, wide, dynamic sound.

QUICK STREAMING

Passengers can surf the web, stream movies and music, and more while you're driving, and up to 50' away from the vehicle when it's parked, using Lincoln Connect.™⁸ It's an integrated 4G LTE Wi-Fi hotspot that can host up to 10 devices at a time. For help making the most of this, or any other Navigator feature, remember your Lincoln Concierge is available 24/7.

¹Don't drive while distracted. Use voice-operated systems when possible; don't use handheld devices while driving. Some features may be locked out while the vehicle is in gear. Not all features are compatible with all phones. ²Requires phone with active data service and compatible software. SYNC 3 does not control 3rd-party products while in use. 3rd parties are solely responsible for their respective functionality. ³Commands may vary by phone and AppLink software. ⁴Certain Alexa functionality is dependent on smart phone and home technology. ⁵After your trial period ends, SiriusXM audio and data services each require a subscription sold separately, or as a package, by Sirius XM Radio Inc. See SiriusXM Customer Agreement for complete terms at www.siriusxm.com. All fees and programming subject to change. Trial subscriptions not available in AK and HI. ⁶Source: April 2018 analysis of satellite data service offers by SiriusXM to automobile manufacturers in the U.S.A. ⁷Available feature. ⁸See footnote 1 on the page titled Standard Features, and your Lincoln Dealer for details.

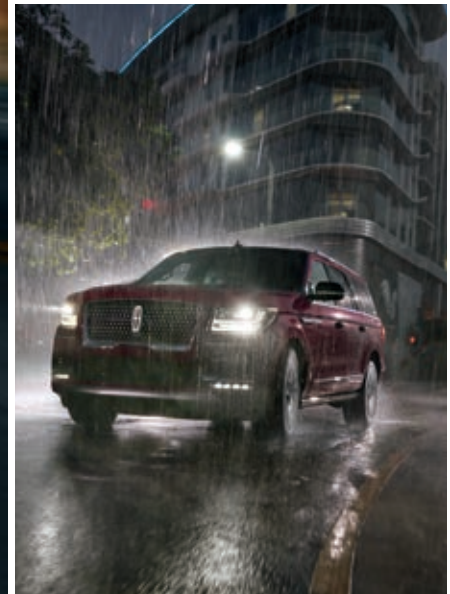
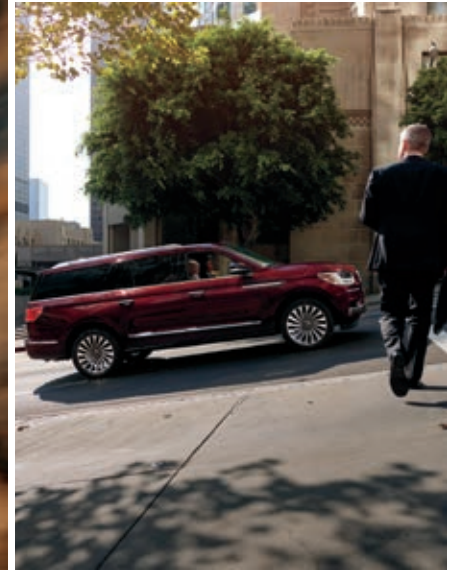


CLEVER WITH ITS GUIDANCE

An informed driver is an empowered driver. That's the belief that inspires our extensive collection of driver-assist technology.^{1,2}

These smart features utilize a network of radar sensors and sophisticated cameras to help guide you through many scenarios. From backing out of your driveway or parking spot onto a busy street, to dealing with fatigue-inducing stop-and-go traffic,² Navigator can help ease your drive.

With 100% LED lighting inside and out, Navigator features LEDs designed to last the lifetime of a vehicle – so you may never need to replace a single one. Its adaptive LED headlamps are speed-sensitive, casting a wider beam at slower speeds and more focused, longer beams at faster speeds. Yet another way Navigator makes life more effortless for you.



¹Driver-assist features are supplemental and do not replace the driver's attention, judgment and need to control the vehicle. ²Available feature.



Standard on every Navigator:¹

BLIND SPOT DETECTION WITH CROSS-TRAFFIC ALERT AND TRAILER COVERAGE

Helps warn of vehicles detected in blind spots while going forward and when slowly backing up

FORWARD AND REVERSE SENSING SYSTEMS

Audible guidance for low-speed maneuvers

RAIN-SENSING WINDSHIELD WIPERS

Help keep your view ahead clear

REAR VIEW CAMERA WITH WASH

Works with the rear window washer control to provide a clear view of what's behind the vehicle when in Reverse

Navigator Select adds:¹

360-DEGREE CAMERA WITH FRONT WASH

Offers a bird's-eye view of the vehicle and its surroundings, and a 180-degree front or rear view

Navigator Reserve adds the Technology Package:¹

ENHANCED ACTIVE PARK ASSIST WITH PARK OUT ASSIST

Helps you parallel park and back into perpendicular spots

AUTO HIGH-BEAM HEADLAMPS

Can help increase your forward visibility

ADAPTIVE CRUISE CONTROL WITH STOP-AND-GO

Helps while highway cruising or in lower-speed traffic

HEAD-UP DISPLAY²

Includes forward collision warning

LANE-KEEPING SYSTEM WITH DRIVER ALERT

Can help alert you if you start to drift out of your lane³

PRE-COLLISION ASSIST WITH AUTOMATIC EMERGENCY BRAKING (AEB)⁴

Also features Pedestrian Detection



¹Driver-assist features are supplemental and do not replace the driver's attention, judgment and need to control the vehicle. ²Don't drive while distracted. See owner's manual for details and system limitations. ³Lane-Keeping System does not control steering. ⁴Pre-Collision Assist with Automatic Emergency Braking (AEB) can detect pedestrians, but not in all conditions and does not replace safe driving. See owner's manual for system limitations.





THE LINCOLN WAY

LINCOLN PICKUP & DELIVERY

When it's time for service, you can simply schedule a Lincoln Pickup & Delivery™ appointment with the Lincoln Way™ app¹ or by phone. We'll handle the rest. We'll pick up your vehicle and deliver it back to you when service is complete.² In between, we'll provide a complimentary Lincoln loaner² – so your time remains distinctly yours. Plus, we'll return your Lincoln washed and ready for your next journey.

LINCOLN & CLEAR

Together, we're helping you put travel stress on standby. CLEAR® biometric technology allows members to bypass security lines at 30+ of the busiest airports and sports stadiums across the nation, getting them through security in about 5 minutes or less. As a 2019 Lincoln Navigator owner, you and your spouse or significant other can enjoy a 6-month complimentary CLEAR membership.³ Take your first step around the line by redeeming your Lincoln benefits with CLEAR.

LINCOLN WAY APP

Downloading the Lincoln Way app¹ to your mobile device makes it easy to connect with us. The app lets you schedule Lincoln Pickup & Delivery, find fuel and compare prices, and even find, reserve and pre-pay for parking in select cities. Use it to contact a Lincoln Concierge, securely manage your Lincoln Automotive Financial Services account, and more. Lincoln Connect™⁴ also works with the app to let you locate your vehicle, start it, and lock or unlock its doors from virtually anywhere. Combine it with the app and the Lincoln Way Alexa Skill⁵ to remotely start your vehicle, and more, simply by speaking to your Amazon Alexa enabled device.

LINCOLN CONCIERGE

You have a personal connection to the latest information about Lincoln vehicles, services and ownership benefits. Simply choose how you'd like to connect, and a highly trained Lincoln Concierge team member will help you explore Lincoln in the way that suits you best. Chat online at Lincoln.com. Reach us through the Lincoln Way app¹ Or call (800) 521-4140, anytime of the day or night.

¹Available via download and compatible with select smartphone platforms. Learn more at lincolnway.com. Message and data rates may apply. ²Lincoln Pickup & Delivery is valid for owners of 2017 or newer model-year Lincoln vehicles. Service available for retail and warranty repairs. Mileage limitations may apply. See dealer for details. ³CLEAR is currently available to U.S. citizens and legal permanent residents with valid photo I.D. Program eligibility for new retail purchases of 2018 and newer model-year Lincoln vehicles (12 months on Lincoln Black Label models; 6 months on all other Lincoln models). Full CLEAR enrollment, including biometrics, required to be completed within 120 days of vehicle delivery. ⁴See footnote 1 on the next page titled Standard Features, and your Lincoln Dealer for details. ⁵Certain Alexa functionality is dependent on smart phone and home technology.

Comparisons based on competitive models (class is Large Traditional Premium Utilities based on Lincoln segmentation), publicly available information and Lincoln certification data at time of release. Vehicles may be shown with optional equipment. Features may be offered only in combination with other options or subject to additional ordering requirements/limitations. Dimensions shown may vary due to optional features and/or production variability. Information is provided on an "as is" basis and could include technical, typographical or other errors. Lincoln makes no warranties, representations, or guarantees of any kind, express or implied, including but not limited to, accuracy, currency, or completeness, the operation of the information, materials, content, availability, and products. Lincoln reserves the right to change product specifications, pricing and equipment at any time without incurring obligations. Your Lincoln Dealer is the best source of the most up-to-date information on Lincoln vehicles.

2019 LINCOLN NAVIGATOR
Lincoln.com



NAVIGATOR/NAVIGATOR L STANDARD FEATURES

POWER AND HANDLING

3.73:1 rear axle ratio
10-speed automatic transmission with SelectShift® capability and paddle activation
Active Grille Shutters
Dual chrome exhaust
Electric parking brake
Lincoln Drive Modes

DRIVER-ASSIST TECHNOLOGY

Autolamp Automatic On/Off Headlamps
Blind Spot Detection with Cross-Traffic Alert and Trailer Coverage
Forward and Reverse Sensing Systems
Hill Descent Control™ (4WD only)
Rain-sensing windshield wipers
SYNC® 3 Enhanced Voice Recognition Communications and Entertainment System with 10" LCD capacitive touchscreen, 911 Assist® SYNC 3 AppLink®, Apple CarPlay™ compatibility, Android Auto™ compatibility, and 2 smart-charging USB ports

DRIVER CONTROLS

Auto Hold
Leather- and wood-trimmed steering wheel with controls for audio and cruise control
Lincoln Connect™ 4G LTE embedded modem with Wi-Fi hotspot capability (enables Lincoln Way™ app¹ features when activated)
Personal Profiles (memory settings for positions of driver's seat, sideview mirrors, power-adjustable pedals, power-tilt/-telescoping steering column, audio, climate and displays)
Power-tilt/-telescoping steering column with memory
Power windows with one-touch-up/-down feature
Remote Start System
Tri-zone electronic automatic temperature control with rear auxiliary controls and vents
Universal garage door opener

EXTERIOR

Easy Fuel® capless fuel filler
Hands-free liftgate
LED daytime running lamps, adaptive headlamps with signature lighting, and taillamps
Power-folding, heated sideview mirrors with black caps, integrated turn signal indicators, puddle lamps, reverse-tilt-down, memory and auto-dimming driver's side
Side-wind stabilization
Tow hooks integrated into front fascia (4WD only)
Trailer Tow Prep Package: 4-/7-pin wiring connectors, transmission oil cooler (4WD only), Smart Trailer Tow Connector, and trailer sway control

LINCOLN EXPERIENCES

Illuminated exterior door handle pockets
Lincoln Approach Detection System
Lincoln logo illuminated welcome mats
Lincoln signature fade-on/-off exterior lighting

AUDIO

Revel® audio system with 14 speakers; includes HD Radio™ Technology
SiriusXM® with 6-month All Access trial subscription²
Voice-Activated Touchscreen Navigation System with pinch-to-zoom capability, and integrated SiriusXM Traffic and Travel Link® with 6-year prepaid subscription²

INTERIOR

1st-row center floor console with winged armrest
1st-row overhead console with sunglasses holder and conversation mirror
2nd- and 3rd-row smart-charging USB ports (4)
12" configurable digital instrument cluster
12V powerpoints (4)
110V/150W AC power outlet
Accessory delay for power features
Active Noise Control
Ambient lighting
Auto-dimming, frameless rearview mirror
Illuminated front door-sill plates
LED dome and reading lights
Reversible cargo area mat

SEATING

Premium leather-trimmed 1st- and 2nd-row heated seats; Lincoln Soft-Touch 3rd-row seat
2nd-row low-back, PowerFold® captain's chairs with recline
3rd-row PowerFold 60/40 split bench seat with power recline and remote-folding outboard head restraints

SAFETY AND SECURITY

Personal Safety System™ for driver and front passenger with dual-stage front airbags,³ safety belt pretensioners, safety belt energy-management retractors, safety belt usage sensors, driver's seat position sensor, crash severity sensor, restraint control module and Front-Passenger Sensing System
3-point safety belt restraints for all seating positions; height-adjustable in 1st row
AdvanceTrac® with RSC® (Roll Stability Control™)
Front-seat side airbags³
Individual Tire Pressure Monitoring System (excludes spare)
LATCH (Lower Anchors and Tether Anchors for Children) for all 2nd-row seating positions and 3rd-row outboard seating positions
MyKey® technology to help encourage responsible driving
Perimeter alarm
Rear view camera with wash
Safety Canopy® System with 3-row side-curtain airbags,³ roll-fold technology and rollover sensor
SecuriCode™ invisible keypad
SecuriLock® Passive Anti-Theft System
SOS Post-Crash Alert System™

ENGINES

Twin-Turbocharged 3.5-liter V6

with Auto Start-Stop Technology
450 hp @ 5,500 rpm⁴
510 lb.-ft. of torque @ 3,000 rpm⁴

EPA-estimated fuel economy ratings⁵
Navigator

16 city/23 hwy/19 combined mpg
(23.6-gal. capacity)

Standard: RWD

16 city/21 hwy/18 combined mpg
Optional: 4WD

Navigator L

16 city/22 hwy/18 combined mpg
(27.8-gal. capacity)

Standard: RWD

16 city/21 hwy/18 combined mpg
Optional: 4WD

LINCOLN ACCESSORIES

ELECTRONICS

Bullfrog® portable Bluetooth® speakers⁶
NextBase® Duo Cinema⁶,⁷
Remote start systems
Vehicle Security System

EXTERIOR

Full vehicle cover⁶
Racks and carriers⁶
Roof crossbars⁶,⁸
Side window deflectors⁶
Splash guards⁶
Sportz® tent⁶
Trailer towing accessories
Wheel lock kit

INTERIOR

Ash cup/coin holders
Carpeted floor mats
Custom UVS100® sunscreen⁶
First aid and roadside assistance kits⁶
Floor liners
Interior light kit
Protective seat covers⁶
Soft cargo cooler bag
Soft cargo organizers (large and standard sizes)

Shop the complete collection at
accessories.lincoln.com

¹Lincoln Connect includes complimentary 5-year subscription for remote features excluding Wi-Fi hotspot, and starts with vehicle sale date (after which fees apply). Subscription is subject to compatible 4G LTE network availability. Evolving technology/cellular networks may affect future functionality. Certain restrictions, 3rd-party terms, or message/data rates may apply. Wi-Fi hotspot includes complimentary wireless data trial that begins upon AT&T activation and expires at the end of 3 months or when 3GB of data is used, whichever comes first, but cannot extend beyond the complimentary subscription period for remote features. To activate, go to www.att.com/lincoln. Lincoln Way smartphone app, for use with Lincoln Connect, is available via download and compatible with select smartphone platforms. Lincoln Way is on the App Store® and Google Play.™ Learn more at lincolnway.com. Message and data rates may apply. ²After your trial period ends, SiriusXM audio and data services each require a subscription sold separately, or as a package, by Sirius XM Radio Inc. See SiriusXM Customer Agreement for complete terms at www.siriusxm.com. All fees and programming subject to change. Trial subscriptions not available in AK and HI. ³Always wear your safety belt and secure children in the rear seat. ⁴Horsepower and torque ratings achieved with 93-octane fuel. ⁵Actual mileage will vary. ⁶Lincoln Licensed Accessory. ⁷Not available with Perfect Position front seats. ⁸Consult owner's manual for details on roof-rack load limits.



TRIM SERIES

NAVIGATOR

Available by Client Retail Order and Fleet only. Please see your Lincoln Dealer for details.

INCLUDES STANDARD FEATURES, PLUS:

- 2nd-row heated, low-back, PowerFold® captain's chairs with pass-through to 3rd row
- Black running boards with Ebony accents
- Comfort 1st-row heated captain's chairs with 10-way power adjustability, 4-way adjustable head restraints and reflexive manual independent thigh support
- Rear-wheel drive (RWD)

OPTIONS

- 2nd-row 40/20/40 split-folding bench seat with PowerFold, outboard heat and recline, and center section that slides forward
- 4-wheel drive (4WD)
- Floor liners in 1st and 2nd rows

NAVIGATOR/NAVIGATOR L SELECT

INCLUDES CERTAIN NAVIGATOR FEATURES, PLUS:

- 1st-row passenger-seat memory
- 360-degree camera with front camera wash
- Adaptive suspension
- Ebony power-deployable illuminated running boards
- Enhanced security (intrusion and inclination sensors)
- Heated steering wheel
- Windshield wiper de-icer
- Wireless charging pad in 1st-row center console media bin

OPTIONS

- 2nd-row 40/20/40 split-folding bench seat with PowerFold, outboard heat and recline, and center section that slides forward
- 4-wheel drive (4WD)
- Floor liners in 1st and 2nd rows
- Inflatable 2nd-row safety belts for outboard seating positions
- Lincoln Play (Rear-Seat Entertainment System with 2 pairs of wireless headphones)¹
- Perfect Position 1st-row heated and ventilated seats with 30-way power adjustability including thigh extenders and head restraints, plus Active Motion® massage functionality
- Power panoramic Vista Roof®
- Cargo Package:** Tiered Cargo Management System and roof-rack crossbars
- Heavy-Duty Trailer Tow Package:** electronic traction assist, heavy-duty radiator, Pro Trailer Backup Assist,^{TM2} and integrated trailer brake controller (TBC) (adds Slow Climb to Lincoln Drive Modes on 4WD models)
- Technology Package:** Adaptive Cruise Control with Stop-and-Go, Pre-Collision Assist with Automatic Emergency Braking (AEB), Head-Up Display, Lane-Keeping System with Driver Alert, Enhanced Active Park Assist with Park Out Assist, and Auto High-Beam Headlamps

NAVIGATOR/NAVIGATOR L RESERVE

INCLUDES CERTAIN SELECT FEATURES, PLUS:

- 1st- and 2nd-row illuminated safety belt buckles
- 2nd-row heated, low-back, PowerFold captain's chairs with 2nd-row center console
- 4-wheel drive (4WD)
- Illuminated Lincoln Star on grille
- Perfect Position 1st-row heated and ventilated seats with 24-way power adjustability including thigh extenders and head restraints
- Power panoramic Vista Roof
- Technology Package**

OPTIONS

- 2nd-row 40/20/40 split-folding bench seat with PowerFold, outboard heat and recline, and center section that slides forward
- 2nd-row heated, low-back, PowerFold captain's chairs with pass-through to 3rd row
- Floor liners in 1st and 2nd rows
- Inflatable 2nd-row safety belts for outboard seating positions
- Lincoln Play (Rear-Seat Entertainment System with 2 pairs of wireless headphones)¹
- Perfect Position 1st-row heated and ventilated seats with 30-way power adjustability including thigh extenders and head restraints, plus Active Motion massage functionality
- Revel® Ultima® audio system with 20 speakers (includes single-CD player)
- Cargo Package**
- Heavy-Duty Trailer Tow Package**

DIMENSIONS

	NAVIGATOR	NAVIGATOR L
WHEELBASE	122.5"	131.6"
LENGTH	210.0"	221.9"
HEIGHT	RWD 76.4"	76.2"
	4WD 76.3"	76.1"
WIDTH	(including mirrors) 93.8"	93.8"
	(mirrors folded) 83.6"	83.6"
HEAD ROOM		
	1st row (max.) 41.8"	41.8"
	2nd row 40.0"	40.0"
	3rd row 37.3"	37.4"
LEG ROOM		
	1st row (max.) 43.9"	43.9"
	2nd row 41.1"	41.1"
	3rd row 36.1"	36.1"
HIP ROOM		
	1st row 61.9"	61.9"
	2nd row 61.6"	61.6"
	3rd row 51.4"	51.4"
SHOULDER ROOM		
	1st row 65.2"	65.2"
	2nd row 65.1"	65.1"
	3rd row 64.2"	64.3"
CARGO VOLUME (cu. ft.)		
	1st row (behind) 103.3	120.2
	2nd row (behind) 57.5	73.3
	3rd row (behind) 19.3	34.3
MAX. TOWING CAPACITY (lbs.)³		
	RWD 8,600	8,400
	4WD 8,300	8,100

2ND-ROW CONFIGURATIONS

NAVIGATOR/NAVIGATOR L

7-PASSENGER SEATING

Captain's chairs with pass-through
Standard: Navigator and Navigator Select
Optional: Navigator Reserve

Captain's chairs with console
Standard: Navigator Reserve

8-PASSENGER SEATING

40/20/40 bench seat
Optional: All trims

¹Lincoln Licensed Accessory. ²Please consult your owner's manual or Pro Trailer Backup Assist Measurement Card for information on setting up your trailer. ³When properly equipped.

Lincoln Original Accessories will be warranted for whichever provides you the greatest benefit: 24 months/unlimited mileage, or the remainder of your Bumper-to-Bumper 4-year/50,000-mile New Vehicle Limited Warranty. Lincoln Licensed Accessories (LLA) are warranted by the accessory manufacturer's warranty. LLA are designed and developed by the accessory manufacturer and have not been designed or tested to Ford Motor Company engineering requirements. Contact your Lincoln Dealer for details and/or a copy of all limited warranties. Amazon, Alexa, Echo and all related logos are trademarks of Amazon.com, Inc. or its affiliates. Android Auto, Google, Google Play, Waze and other marks are trademarks of Google Inc. Apple, Apple CarPlay and iPhone are trademarks of Apple Inc., registered in the U.S. and other countries. App Store is a service mark of Apple Inc. Bullfrog is a registered trademark of Stillwater Designs. Clari-Fi, QuantumLogic, Revel, Ultima and the Revel logo are trademarks of HARMAN International Industries, registered in the United States and other countries. "HD Radio" and the HD Radio logo are proprietary trademarks of iBiquity Digital Corporation. Sirius, XM, SiriusXM, and all related marks and logos are trademarks of Sirius XM Radio Inc. The Bluetooth word mark is a trademark of the Bluetooth SIG, Inc.



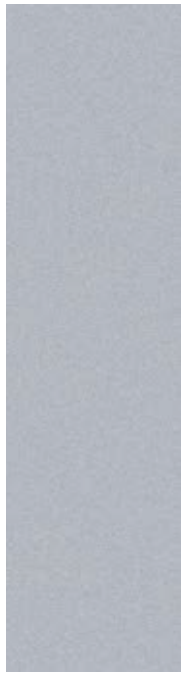
EXTERIOR FINISHES



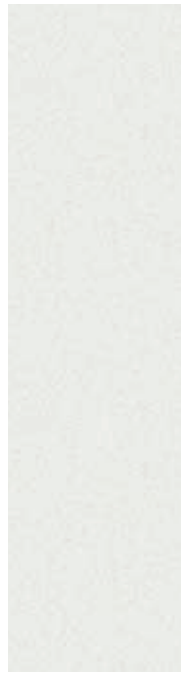
1
Ruby Red
Metallic Tinted
Clearcoat¹



2
Infinite Black
Metallic



3
Ingot Silver
Metallic



4
White Platinum
Metallic Tri-coat¹



5
Silver Jade
Metallic



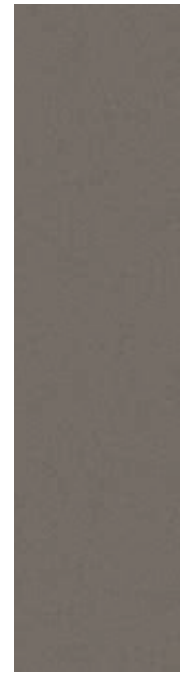
6
Blue Diamond
Metallic



7
Ceramic Pearl
Metallic Tri-coat¹



8
Burgundy Velvet
Metallic Tinted
Clearcoat¹



9
Iced Mocha
Metallic¹



10
Rhapsody Blue¹

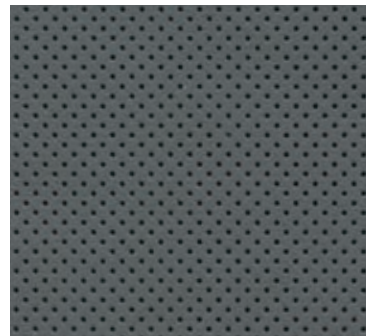
INTERIOR PALETTE



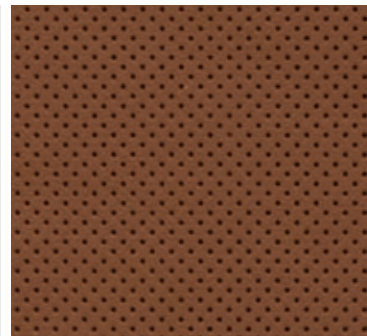
Ebony



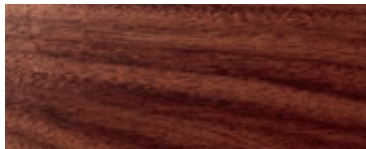
Cappuccino



Medium Slate



Russet



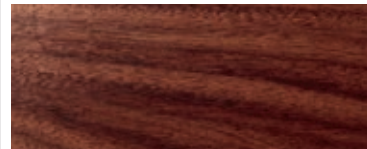
Santos Rosewood



Espresso Ash Swirl



Gray Ash Swirl



Santos Rosewood

INTERIOR	EXTERIOR	
Ebony		
Santos Rosewood	Navigator	1-9
	Select	1-9
	Reserve	1-10
Cappuccino		
Espresso Ash Swirl	Navigator	1-9
	Select	1-9
	Reserve	1-10
Medium Slate		
Gray Ash Swirl	Select	1-4, 6
	Reserve	1-4, 6
Russet		
Santos Rosewood	Reserve	2-4, 6-9

Colors are representative only. ¹Additional charge.





20" 14-Spoke Ultra Bright-Machined Aluminum with Painted Pockets
NAVIGATOR



22" 12-Spoke Ultra Bright-Machined Aluminum with Dark Tarnish-Painted Pockets
NAVIGATOR SELECT



22" 16-Spoke Ultra Bright-Machined Aluminum with Dark Tarnish-Painted Pockets
NAVIGATOR RESERVE



22" 6-Spoke Ultra Bright-Machined Aluminum with Dark Tarnish-Painted Pockets and High Gloss Finish
NAVIGATOR SELECT / NAVIGATOR RESERVE Optional

